



Description

TDW's OptionAll™ Cleaning Pigs can be assembled into several configurations. TDW has assembled four standard configurations to meet most applications.

Due to the unique design of the OptionAll Pig, customization is quickly accomplished with simple hand tools to achieve the best option for your pigging application. With the OptionAll Pig, you truly have an option.

Features

The OptionAll Cleaning Pig features TDW's Formula SI polyurethane which is designed to provide superior abrasion resistance. This new polyurethane means more miles and more runs at less cost.

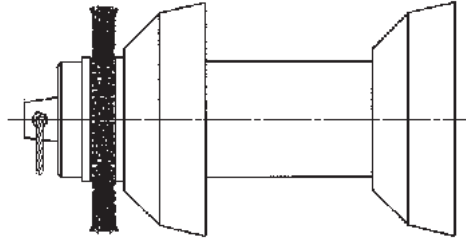
- Non-wearing components are constructed of Ultra High Molecular Weight (UHMW) polyethylene to protect internal pipe and valve surfaces.

Options

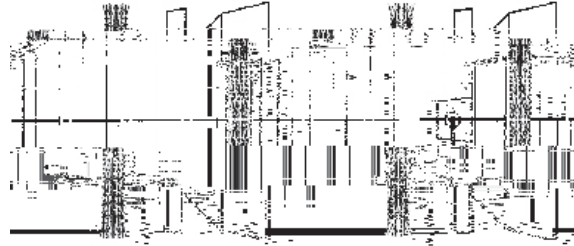
T.D. Williamson is committed to providing



- Recessed steel bolt and locknut construction is designed to prevent breakup of the pig in the pipeline.
- Low-cost, long-wearing design provides users with the option to dispose of or rebuild the pig.
- Large-diameter conical cups are designed to seal in the thinnest of pipe walls.
- Lightweight design can be handled by one person and reduces shipping costs.
- All OptionAll Pigs are supplied with large eye rings, which are designed to allow the pig to be easily hooked and removed from the receiving trap.



Configurations



Size

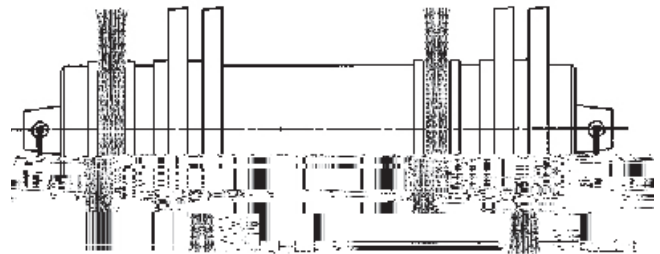
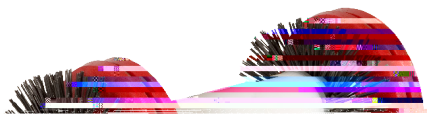
Weight

A

B

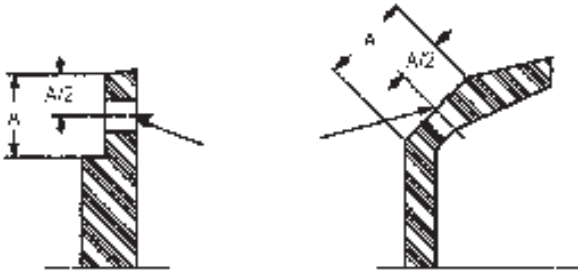
C

Size	Weight	A	B	C



Replacement Cups, Discs and Brushes

Size Inch (mm)	Cup Weight Lbs (kg)	Cup Part Number	Disc Weight Lbs (kg)	Disc Part Number	Brush Weight Lbs (kg)	Brush Part Number
4 (100)	0.4 (0.2)	00-4120-0004-03	0.2 (0.1)	00-1702-0014-00	0.5 (0.25)	02-2605-0004-00
6 (150)	1.2 (0.5)	00-4120-0006-03	0.8 (0.4)	00-1702-0001-00	0.5 (0.25)	00-7078-0006-00
8 (200)	2.5 (1.1)	00-4120-0008-03	1.5 (0.7)	00-1702-0002-00	1.0 (0.5)	00-7078-0008-00
10 (250)	3.7 (1.7)	00-4120-0010-03	2.4 (1.1)	00-1702-0003-00	2.0 (1.0)	00-7078-0010-00
12 (300)	6.0 (2.7)	00-4120-0012-03	3.4 (1.5)	00-1702-0004-00	3.0 (1.5)	00-7078-0012-00
14 (350)	8.0 (3.6)	00-4120-0014-03	4.0 (1.8)	00-1702-0010-00	3.75 (1.7)	00-7078-0014-00

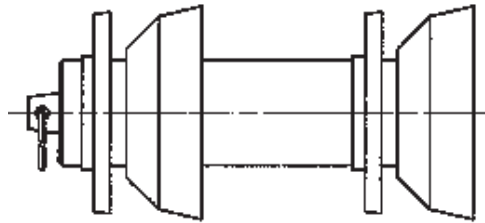
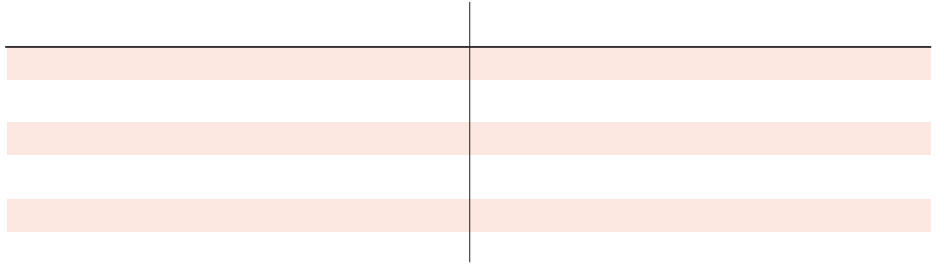


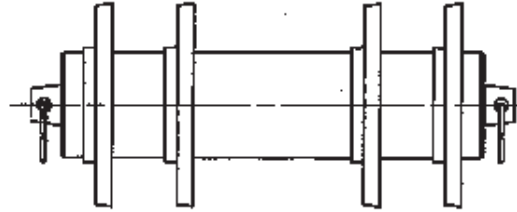
Options



Configurations

4C configurations are recommended for light cleaning, line filling and dewatering, batch separation and liquid





4D configurations are recommended for bi-directional applications in which the pig has to be run in two directions before being removed from the line. They are normally used for line filling-testing-dewatering applications in lines up to 40 miles (65 km) in length.

Size Inch (mm)	Weight Lb. (Kg)	Part Number	A Inch (mm)	B Inch (mm)	C Inch (mm)
4 (100)	2.0 (0.9)	01-1705-0004	9.50 (241)	6.75 (171)	4.31 (110)
6 (150)	6.7 (3.0)	01-1705-0006	14.9 (378)	11.2 (286)	6.25 (159)
8 (200)	12 (5.4)	01-1705-0008	18.8 (476)	15.1 (384)	8.38 (213)
10 (250)	22 (10)	01-1705-0010	21.0 (533)	17.1 (435)	10.5 (267)
12 (300)	31 (14)	01-1705-0012	24.5 (622)	20.6 (524)	12.5 (318)
14 (350)	32 (15)	01-1705-0014	24.5 (622)	20.6 (524)	13.8 (349)



6D configurations are recommended for bi-directional applications in which the pig has to be run in two directions before being removed from the line. They are normally used for line filling-testing-dewatering applications in lines up to 60 miles (97 km) in length.

Size	Weight	A	A	A
				A100)

Replacement Cups and Discs

Size Inch (mm)	Cup Weight Lb. (Kg.)	Cup Part Number	Disc Weight Lb. (Kg.)	Disc Part Number
4 (100)	0.4 (0.2)	00-4120-0004-03	0.2 (0.1)	00-1702-0014-00
6 (150)	1.2 (0.5)	00-4120-0006-03	0.8 (0.4)	00-1702-0001-00
8 (200)	2.5 (1.1)	00-4120-0008-03	1.5 (0.7)	00-1702-0002-00
10 (250)	3.7 (1.7)	00-4120-0010-03	2.4 (1.1)	00-1702-0003-00
12 (300)	6.0 (2.7)	00-4120-0012-03	3.4 (1.5)	00-1702-0004-00
14 (350)	8.0 (3.6)	00-4120-0014-03	4.0 (1.8)	00-1702-0010-00

Bypass Hole Recommendations*

