



T.D. Williamson

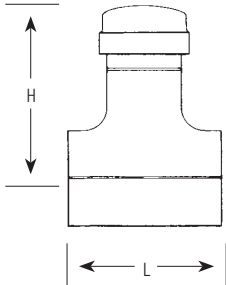


The SHORTSTOPP® 300D Fitting is an extruded-

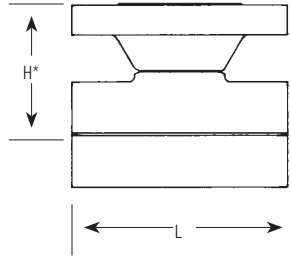
300D Split Tees Class 300

Maximum allowable operating pressure (in PSI) per ASME B31.8 at -20 to +100° F

Size		Weight		Design Factor				Part Number
Inches	DN	Lbs.	Kg.	0.72	0.60	0.50	0.40	
2	50	9	4	740	740	740	740	26-0214-0000-00
3	80	15	7	740	740	740	740	26-0215-0000-00
4	100	80	36	740	740	740	740	26-2299-0004-00
6	150	150	68	740	740	740	605	26-2299-0006-00
8	200	240	109	740	740	740	640	26-2299-0008-00
10	250	390	177	740	740	740	605	26-2299-0010-00
12	300	570	259	740	740	740	605	26-2299-0012-00



2- and 3-inch fittings include cap, completion plug, and O-ring.



4- to 12-inch fittings are complete with blind flange, studs, nuts, gasket, O-ring, and completion plug.

Dimensions

Size		L		H*	
Inches	DN	Inches	mm	Inches	mm
2	50	5.75	146	5.56	141
3	80	7.67	195	11.69	297
4	100	10.75	273	6.22	158
6	150	14.00	356	7.91	201
8	200	16.50	419	9.47	240
10	250	20.00	508	11.03	280
12	300	22.00	559	12.72	323

*Does not include blind flange and gasket.

Spare O-Rings

Size		Part Number
Inches	DN	
2	50	00-0117-0010
3	80	00-0117-0013
4	100	00-1250-0001
6	150	00-1250-0002
8	200	00-1250-0003
10	250	00-1250-0004
12	300	00-1250-0005

300D Completion Plugs** Class 300

Size		Part Number	Weight	
Inches	DN		Lbs.	Kg.
2	50	07-1745-0000-00	1	0.3
3	80	07-1746-0000-00	2.1	1
4	100	07-0351-0000-00	2.5	1
6	150	07-1027-0000-00	10	5
8	200	07-1853-0000-00	20	9
10	250	07-1854-0000-00	31	14
12	300	07-1855-0000-00	44	20

**Plug setting pressure limited to pressure rating of completion machine.